

GOAL 2: PROTECT FARMLAND FROM DEVELOPMENT, SUPPORT FARM BUSINESSES, SUPPORT SUSTAINABLE FARMING PRACTICES, & ATTRACT YOUNG FARMERS



Another finding from the online survey and listening sessions was that residents are very concerned about the potential loss of farms and farmland to development. Warren’s history and identity is closely linked to agriculture, and residents often identify the rural farm vistas along our country roads as one of the things they value about the Town. To lose the Town’s farms would mean losing part of the Town’s identity and what makes it a special place.

However, the reality is that farmers face significant challenges that make it a struggle to remain economically viable. As is the case elsewhere in the State, the high cost of seed, animal care, equipment and its maintenance, and property taxes as well as the decline in profits from production and sale of traditional crops pose threats to the continued existence of the Town’s farms. In order to remain viable and continue operating, farmers are exploring creative new farm-related business activities and are hoping the community will support their

efforts, since ensuring our farms remain viable helps protect the rural farming character of Warren that everyone has come to appreciate.

The community believes that thriving farms and farmland preservation are not only fundamental to Warren’s rural character, scenic beauty, and environmental health but also the Town’s ability to foster economic and social prosperity. This includes creating local jobs and robust community services that will attract young people and their families. Achieving successful outcomes in agriculture will contribute significantly to addressing other top priorities for the Town. Additionally, high quality water resources are intrinsic to the town’s prosperity as a significant portion of the town is within the watersheds of Lake Waramaug, the Shepaug Reservoir, and the Housatonic River, and a large public drinking water supply watershed.



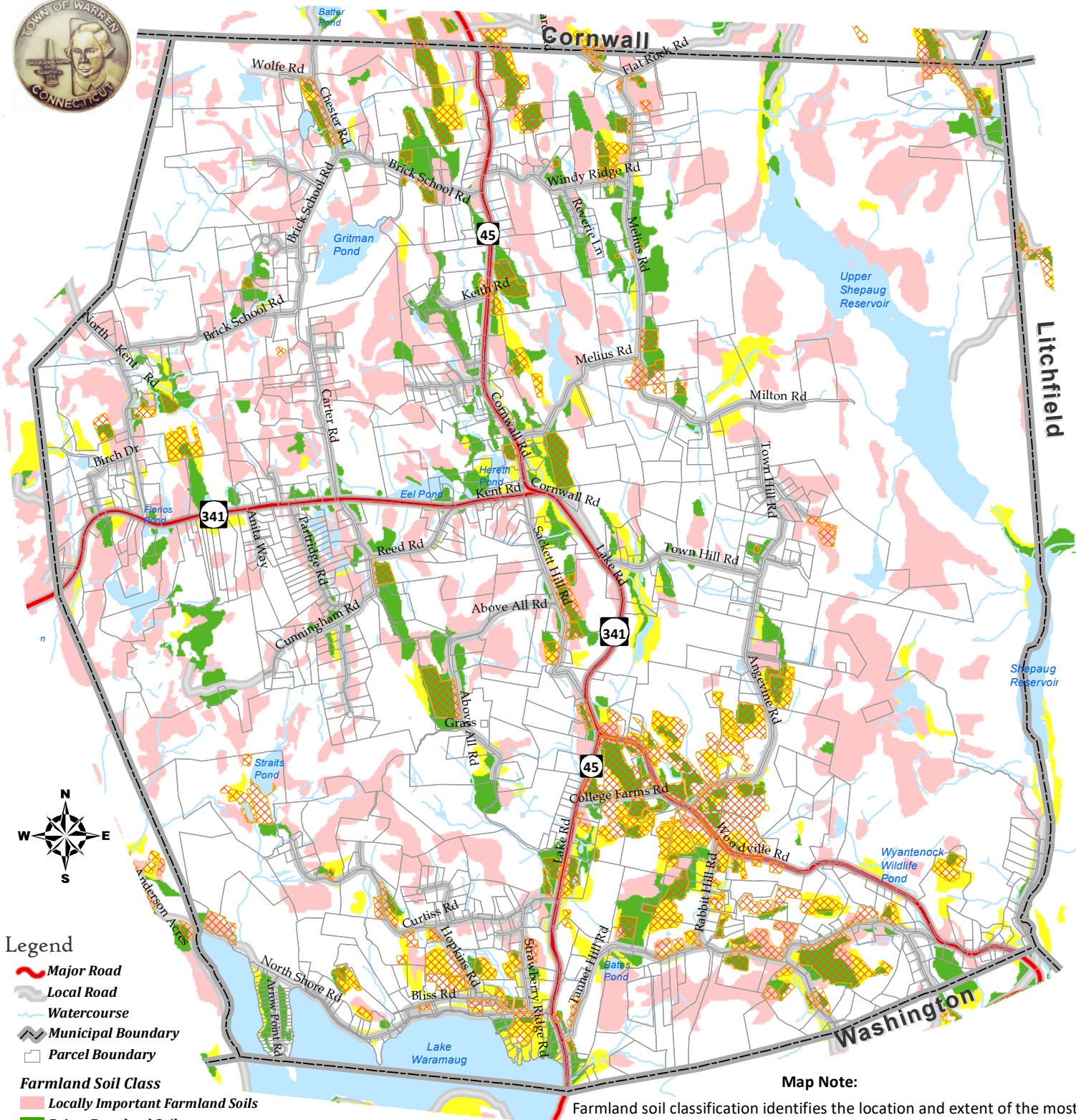
Farming Achievements Since 2008:

✓ **Right-to-Farm Ordinance Adopted in 2012**

OBJECTIVE	ACTION	LEAD	PARTNERS
<i>Support Farm Viability including farmers' efforts to diversify beyond traditional farming practices, crops, and distribution methods.</i>	Solicit input from community farmers in an effort to research and develop agritourism-friendly regulations.	P&Z	
	Evaluate and consider regulations that would permit farm events in a manner that remains respectful of the surrounding residential neighborhoods.	P&Z	
	Support the Northwest Connecticut Regional Food Hub which expands markets for locally grown food.	BOS NHCOG	
	Consider establishing an informal agricultural association comprised of owners of Warren farming businesses.	BOS	
	Survey owners of agricultural properties and farmers in Warren to determine objectives and visions for their agricultural work and properties, as well as identify interest in conservation.	WLT	P&Z
<i>Support Farmland Preservation by protecting existing farms from future residential and/or commercial development.</i>	Conduct assessment of which unprotected farms might be eligible for the Department of Agriculture's Farmland Preservation Program, Community Farms Preservation Program, and USDA-NRCS Agricultural Lands Easement Program.	WHLT WLT	
	Create an inventory of all working farms and farmers in Warren, including those leased for farming, and identify those farms which are not protected.	WLT BOS	WHLT
	Update soils testing for certain farms to determine whether current maps accurately identify prime and important farmland soils as defined by the state.	WHLT	WLT LWTF
	Work with community land trusts to further preservation efforts, particularly during subdivision process.	P&Z	WLT WHLT
<i>Support and encourage farm ownership and continuity.</i>	Identify potential opportunities to provide and/or increase land access to (young) farmers in Warren.	BOS	WLT WHLT
	Increase awareness of tools available for farm succession planning (for example: CT Farmlink), possibly by email and/or mailing a flyer about available tools each year to Warren farmers.	BOS	NHCOG WLT WHLT
<i>Promote good farming practices to preserve quality of Town natural resources.</i>	Identify soils and farmland properties for which water quality is or can be impacted directly by farming practices and determine strategies to support ongoing farming practices that are aligned with sustainable water-quality objectives.	LWTF	WLT

Agricultural Resources Town of Warren, CT.

This map is not to be used as accurate survey or as a substitute for field assessment. The map is subject to change.



- Legend**
- Major Road
 - Local Road
 - Watercourse
 - Municipal Boundary
 - Parcel Boundary
- Farmland Soil Class**
- Locally Important Farmland Soils
 - Prime Farmland Soils
 - Statewide Important Farmland Soils
 - Priority Farm Fields

Map Note:
Farmland soil classification identifies the location and extent of the most suitable land for producing food, feed, fiber, forage, and oilseed crops. This soils survey depicts information about the kinds and distribution of soils on the landscape. The soil map and data use in the soil survey database product were prepared by soil scientists as part of the National Cooperative Soil Survey.

Sources:
Connecticut Department of Energy & Environmental Protection (CTECO), Northwest Conservation District, Tele-Atlas Road Centerlines, Town of Warren Assessor Office, Litchfield Hills Greenprint Collaborative US Department of Agriculture, NRCS

"Priority Farm Fields" were determined by The Litchfield Hills Greenprint, based on aerial imagery and USDA soils of prime or statewide importance for farmland and parcels ≥ 50 acres (From Town Assessor data) Parcels that contained at least 10% of farm fields and 25% of USDA designated farmland soils were selected to create the Priority Farm Fields dataset.

Map Prepared by:

HVA
Housatonic Valley Association
150 Kent Road Box 28
Cornwall Bridge, CT 06754
860.672.6678
hvamaps@gmail.org

